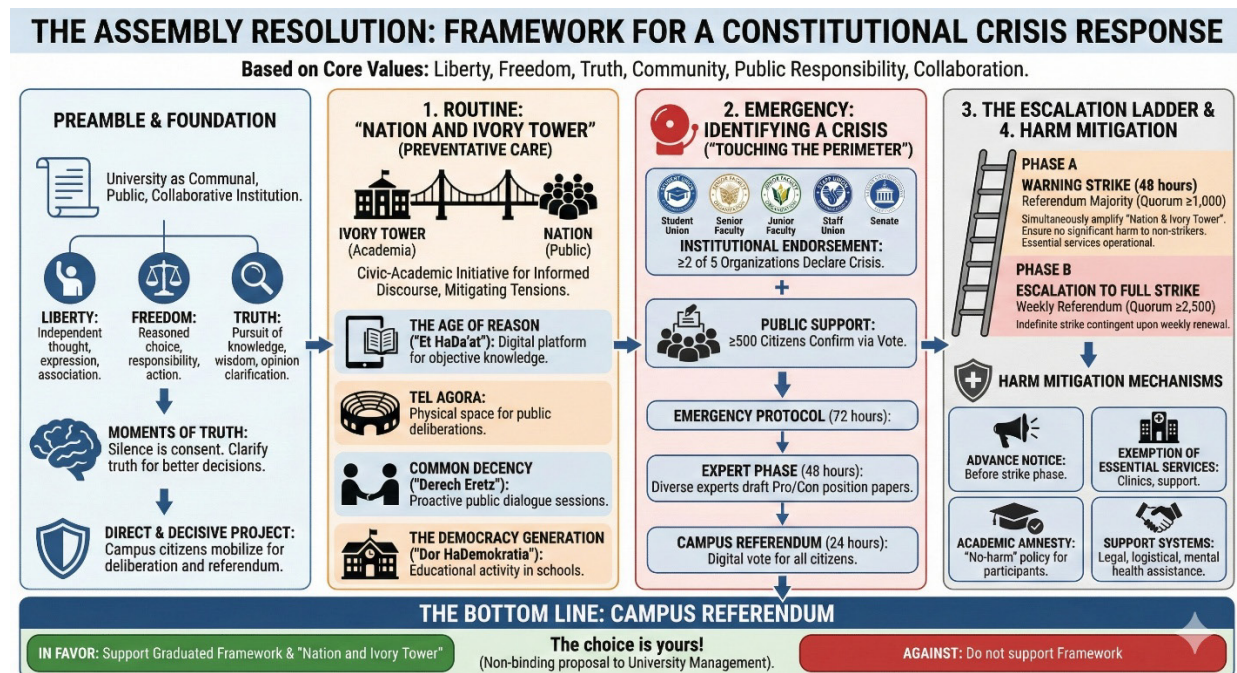


# Student Assembly: Proposed Resolution (December 2025)

## The Referendum Question

Do you support the adoption of the action plan proposed by the Student Assembly, comprising two tiers?

- **In Routine Times:** Establishing the "Nation and Tower" project – a civic–academic initiative to promote democratic discourse, make knowledge accessible, and bridge the gap between the university and the general public.
- **In Emergencies:** Activating a **gradual response mechanism** to a constitutional crisis. This emergency protocol will be triggered only after the crisis is identified by the representatives of the university's constituent organizations and the collection of public signatures (with a quorum of 500), and is subject to approval via a campus–wide referendum.
- **Strike Protocol:** Approval (with a quorum of 1,000) will lead to a 48–hour warning strike. This can only transition into a full strike subject to weekly re–validation via referendum (with a quorum of 2,500), while committing to minimizing harm, maintaining essential services, and protecting the academic freedom of choice for students and faculty.



## Preamble

### Whereas:

- Tel Aviv University is committed to the values of **Liberty** – the right to independent thought, creative expression, and free association;
- To the values of **Freedom** – the ability to make reasoned choices between good and evil, to take responsibility, and to act;
- And above all, to the value of **Truth** – the pursuit of information, the creation of knowledge, the cultivation of wisdom, and the clarification of opinion.

### Whereas:

- The University is a communal institution belonging to all its "citizens": students, academic and administrative faculty, and all campus employees;
- It is a public institution – established by the public, funded by them, and for their benefit – and therefore bears a responsibility toward the people and the nation;
- And it is a collaborative institution – where fateful decisions ought to be made by its citizens.

### Whereas:

- At a crossroads, every conscious move – whether by action or omission – is a choice;
- In fateful moments of crisis, silence is a form of consent;
- And these are "moments of truth," in every sense: times that demand we clarify the truth to make better decisions.

### Therefore:

The University fulfills its role as a spiritual, ethical, and practical social trustee for the citizens of the state. It has launched a first-of-its-kind global initiative, the "Direct and to the Point" project. In this project, we, the citizens of the campus, make our voices heard: mobilizing to choose a core issue for deliberation, discussing it in depth within the Student Assembly, formulating a proposed resolution, and bringing it to a vote in a campus-wide referendum.

20

In a preliminary campus survey regarding the issue to be prioritized, respondents voted to discuss the appropriate campus response to a **constitutional crisis**. After extensive and in-depth deliberations, the Assembly proposes adopting a **gradual institutional model** in response to a severe constitutional crisis – a response that expresses the sovereignty of the campus community, is backed by professional knowledge, and maintains proportionality and the protection of minority rights.

---

## 1. "The Nation and the Tower" (Oma U'Migdal)

The University strives to prevent a slide into a constitutional crisis. To this end, it will launch a new civic project that bridges the "Nation" and the academic "Ivory Tower." The project aims to promote informed and open social discourse to mitigate and resolve destructive tensions. This gradual, integrated process will begin immediately upon approval as a "preventative treatment" and will be intensified during emergencies.

"Nation and Tower" is a civic–academic initiative to strengthen the bond between the university and Israeli society, operating through four parallel channels:

- **The Time of Knowledge (Et Ha'Daat):** A digital platform for making objective knowledge accessible.
  - **The Tel Agora:** A physical space on campus for open public deliberations.
  - **The Way of the Land (Derech Eretz):** Proactive field outreach for dialogue sessions with the general public.
  - **The Democracy Generation (Dor Ha'Democratia):** Educational activities in schools to impart democratic skills.
- 

## 2. Identifying a Constitutional Crisis and Activating the Emergency Protocol

The emergency protocol will be activated if two cumulative (not alternative) conditions are met:

1. **Institutional Support:** At least two of the five foundational university organizations (Student Union, Senior Faculty, Junior Faculty, Staff Union, and the Senate) declare the situation a "constitutional crisis."
2. **Public Support:** At least 500 campus citizens confirm via vote that Israel is indeed in a constitutional crisis.

If both conditions are met, a **two–stage emergency protocol** (72 hours total) will begin:

- **The Experts' Stage (48 hours):** Experts in Law, Political Science, and Philosophy will draft two brief, equal–length position papers – for and against.
  - **Campus Referendum (24 hours):** A digital vote for all campus citizens.
- 

## 3. The Strike Scale

Instead of an "immediate total strike," the Assembly has developed a model of gradual escalation:

- **Phase A – Warning Strike (48 hours):** If a majority in the referendum (with at least 1,000 participants) votes "Yes," a 48–hour warning strike will be declared.

Mechanisms will ensure no significant academic or administrative harm to those choosing not to strike, and the rights of dissenters to maintain their routine will be preserved. Essential services (e.g., clinics and psychological services) will remain operational.

- **Phase B – Assessment and Escalation to Full Strike:** One week after the warning strike, another referendum will be held. If the situation remains unchanged and the referendum receives support (with a 2,500–participant quorum), the strike will become full and indefinite – contingent on weekly re–validation via referendum.

---

#### 4. Harm Mitigation Mechanisms

To ensure the move is proportionate and sustainable, the university will act to minimize harm to dissenters, minorities, and vulnerable populations:

- **Advance notice** prior to escalating to a full strike.
- **Exemption of essential services** (legal/psychological clinics, basic student support).
- **Academic Amnesty:** No academic penalty for participation; automatic extensions and attendance waivers within a defined framework.
- **Support services:** Legal, logistical, and mental health support for participants.



The Assembly